

**STOCKOUT**

**SALE**

ON SELECTED ITEMS

**SHOP NOW**

up to

**- 50%**



**actionwear**



50%

## Drummer - ATDRMR

6 panels, contrasting visor, pre-embroidered, piping on side panels, contrasting stitched eyelets, with inserts, structured front panel, precurved visor, velcro closure, polyester sweatband, 1 top product.



50%

## Monk - ATMONK

5 panels, flat visor, metal eyelets, flat visor, unstructured front panel, nylon back strap with pvc buckle, suitable for printing, 8 stitchings on visor, cotton sweatband.



50%

## Thunder - ATTHUN

5 panels, 6 panels, 7 panels, mellon shape, sandwich, side mesh, unstructured front panel, precurved visor, elastic back strap with pvc buckle, sweatband: 35% cotton - 65% polyester.



50%

## Mets - ATMETZ

6 panels, flat visor, stitched eyelets, flat visor, structured front panel, pvc closure, 6 stitchings on visor, sweatband: 35% cotton - 65% polyester.



50%

## Performer - ATPERF

100% polyester size: one size fits all, 5 panels, mellon shape, velcro closure, polyester sweatband, breathable, sandwich, side mesh, unstructured front panel, precurved visor.



50%

## Gang - ATGACA

6 panels, flat visor, stitched eyelets, assorted sizes, flat visor, structured front panel, fully closed at rear, 8 stitchings on visor, sweatband: 35% cotton - 65% polyester.



50%

## Napapiiri - ATNAIL

6 panels, unstructured front panel, precurved visor, polar fleece ear-flap, quilted nylon lining, fully closed at rear, closure with string and stopper, waterproof, windproof, cold proof, 2 stitchings on visor.



navy

black

grey

50%

## Smart - ATSMAT

6 panels, stitched eyelets, ear-flap, unstructured front panel, precurved visor, quilted nylon lining, fully closed at rear, closure with string and stopper, 6 stitchings on visor, cotton sweatband.



navy

grey - dark

grey

50%

## Walker - ATWALK

Beanie, beanie with visor, precurved visor, available in kids size too, 6 stitchings, weight: approx. 50g.



natural white

olive

grey

black

50%

## Freebord - ATFREB

Beanie, oversize beanie, double layer, weight: approx. 110g, opened on top.



avio

burgundy

grey

black

olive

50%

## Medlev - ATMEDL

Beanie, oversize beanie, different patterns, weight: approx. 58g.



grey

dark grey

natural white

black

navy

50%

## Croxy - ATCROX

Beanie, fully fleeced lining inside, beanie with pompon, cold proof, different patterns, weight: approx. 100g.



black

grey

light grey

navy

white



50%

## Inuit - ATINUI

Beanie, peruvian shape, pompon, fully fleeced lining inside, cold proof, weight: approx. 120g.



black



grey



natural white

50%

## Teen - ATTEEN

100% acrylic, knitted yarn with cuff and pompon. 98 gsm.



fuchsia - yellow



purple - green



grey - green



grey - orange



arancio - viola

50%

## Kid Nomad - ATKINO

6 panels, adventure, various, kids size, veil, unstructured front panel, precurved visor, fully closed at rear, closure with string and stopper, cotton sweatband.



olive

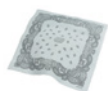


beige

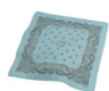
50%

## Bandana - ATBAND

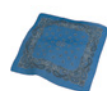
Bandana, printed.



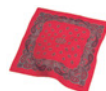
white



light blue



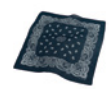
royal



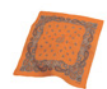
red



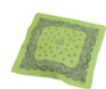
black



black



orange



green

50%

## Pashma - ATPASH

100% viscose size: 200 x 70 cm, scarf with tassels, weight: approx. 175g.



black



burgundy



red



fuchsia



pink



green



light blue



natural white



colori

50%

## Comfy - ATCOMF

Scarf, atlantis label easily removable, weight: approx. 193g.



black/black



brown



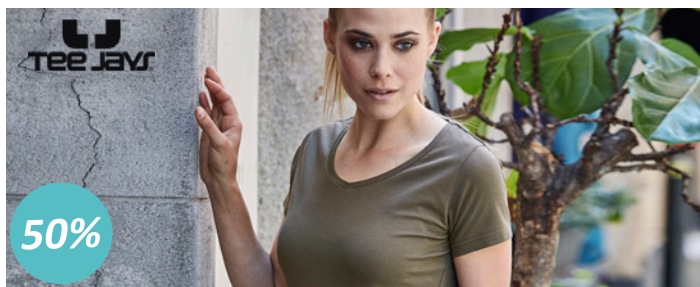
black



grey



natural white



### Ladies Fashion Stretch Tee - TJ455

90% ringspun combed cotton, 10% elastane. ladies extra length fashion tee, fine lightweight stretch fabric, full feeder elastane, enzymewash, preshrunk, neck with lycra.



hot pink



turquoise



### Active Sweat Jacket Kids - ST5770

80% ring-spun cotton, 20% polyester, 280 g/m<sup>2</sup>, fashionable hooded sweatjacket for children made of warm and soft cotton-polyester-blend with a modern and sporty design, kangaroo pocket and wide rib cuffs. brushed inside for extra comfort and warmth.



blue midnight



crimson red



hawaii blue



kiwi



### Classic Junior - ST2200

100% ring-spun cotton, 155 g/m<sup>2</sup>, classic bestseller: soft t-shirt for children, without side seams made of durable single jersey cotton. classic bestseller, taped shoulder to shoulder, tubular fabric, size and care label in the collar.



bottle green



### Active Knit Fleece Jacket - ST5970

Fleece jacket 100% polyester knit fleece, knitted surface, brushed inside, side seams, contrast zipper, neck tape and polyester binding on collar, cuff & hem, 2 pockets with zipper.



blue melange



green melange



### Polo Kids - ST3200

100% ring-spun cotton, single jersey, piqué-look, 170 g/m<sup>2</sup>, soft single jersey polo shirt for children, with a pleasing piqué look, rib collar and 2 tone-on-tone buttons.



yellow



### Baby Organic Vest Babysuit - MABZ39

100% organic cotton. bodysuit, popper opening, binding for shape retention, tear off label. 200 gsm.



black



organic natural



white



mantis  
MINI

40%

### Girls Long Sleeve T - MAHM82

100% cotton, girls long sleeve t, slightly wider neck, tab and button on sleeves so can be rolled back, curved hem, narrow rib at neck, twin needle hem and sleeve ends tear-off label, 150g/m<sup>2</sup>, single jersey.



fuchsia



white

mantis

40%

### Women's "Black Label" Tencel T - MAM111

1100% lyocell (tencel®, single jersey), fabric for drape, subtle shine and softness, wider neckline with narrow rib, tear off label, capped sleeves, straight hem with side vents, box fit t with gentle a line shape. 150 g/m<sup>2</sup>



white

mantis

40%

### "Black Label" Ten cel Tank Vest - MAM112

100% lyocell (tencel®), single jersey, soft touch, high-drape fabric, high neck vest with cutaway armhole shape, narrow rib at neck for shape retention, tear off label, straight hem with side vents, gentle a line shape. 150 g/m<sup>2</sup>



white

mantis

40%

### Women's U Neck Organic T - MAM114

100% cotton (single jersey), scoop neck, narrow rib at neck, tear off label, twin needle hem, longer length, gently fitted, side seams, modern fit. 150 g/m<sup>2</sup>



organic  
natural

mantis

40%

### Women's Sweat T - MAM122

80% cotton, 20% polyester short sleeve sweatshirt, wider neck with binding, rolled back sleeve, curved hem, tear off label. french terry, 280gsm.



black



white

mantis

40%

### Long Length Tee - MAM71

100% cotton, combed and ring-spun, neckband, ribbed neckline, double topstitching on sleeve and bottom hem, extra long cut, easy re-labelling. 120 g/m<sup>2</sup>



punk pink

mantis

40%

### Women's Superstar Hoodie - MAM74

80% cotton, 20% polyester, double-needle stitching on back of hood, drawstring in contrast colour, raglan sleeve with ribbed sleeve end, kangaroo pouch pocket up front, ribbed bottom hem, side seams, easy rebranding. 330 g/m<sup>2</sup>



fuchsia

mantis

40%

### Superstar Sleeveless Hoodie - MAM89

80% cotton, 20% polyester, soft and durable brushed inner fleece, double layered, 3-piece hood with natural coloured drawcords, double taping at back neck, tear off back neck label, full zip with brass-effect up to high-neck, kangaroo pockets, rib at armholes and pocket edges. 330 g/m<sup>2</sup>



mantis  
KIDS

40%

### Girls Long Sleeve T - MAMK82

100% cotton (single jersey), crew neck, tear off label, featuring tab and button so sleeve can be rolled back to 3/4 length, fashionable scoop hem, modern fit. 150 g/m<sup>2</sup>



black



white



fuchsia

40%

### Men's Superstar Vest - MAM85

100% cotton, combed and ring-spun, single jersey with ultra-soft peach finish, binding at neck and armholes, contrast binding at back neck, flatlock x stitch detail at front neck, shaped back, twin needle hem, tear-off label at back neck, perfect for re-branding. 150 g/m<sup>2</sup>



swiss navy